

# 9200 GLENWOOD STREET



OVERLAND PARK, KANSAS

**1,600 - 2,600 SF, \$22.00 PSF**

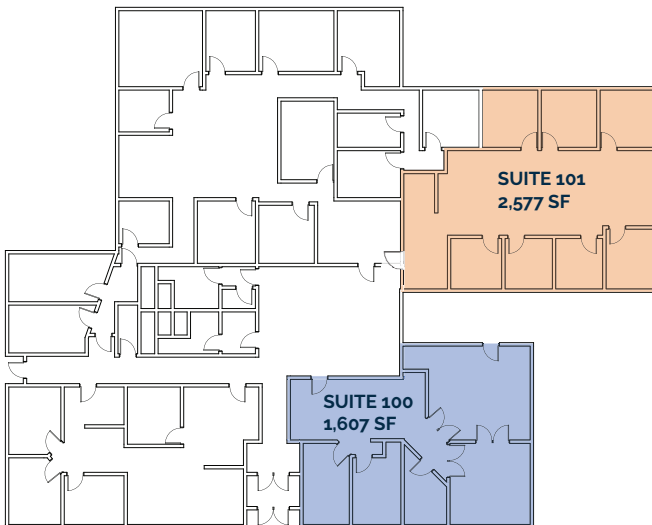
OFFICE SUITES AVAILABLE



# PROPERTY HIGHLIGHTS

- Local onsite ownership
- Two private offices for lease with flexible terms and simple, standard lease
- Newly renovated restrooms
- Located one block from Metcalf Avenue-instant access to several retail, dining, and services
- Easy access to Interstate 435 and Highway 69, connecting you to all major throughfares
- Ample surface parking (3.8/1000 SF)

OVERLAND PARK, KANSAS



FOR MORE INFORMATION, CONTACT:

**MELISSA GALL**

Associate

Direct: 816.831.1404

melissa.gall@range-rp.com

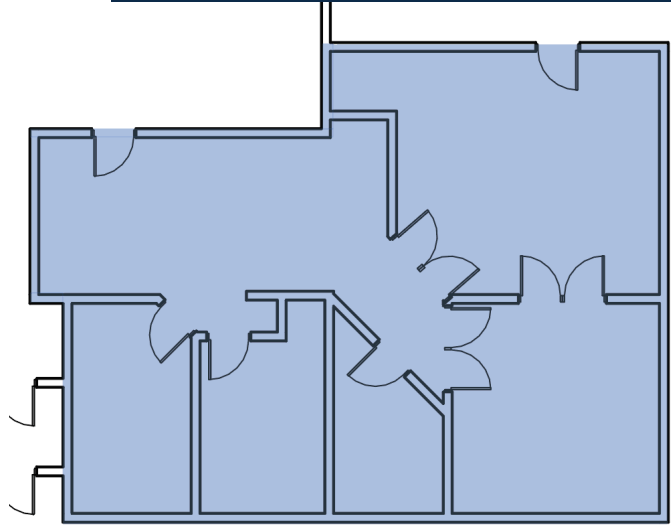


**RANGE**  
REALTY PARTNERS



# SUITE 100

1,607 SF AVAILABLE, \$22.00 PSF



FOR MORE INFORMATION, CONTACT:

**MELISSA GALL**

Associate

Direct: 816.831.1404

[melissa.gall@range-rp.com](mailto:melissa.gall@range-rp.com)

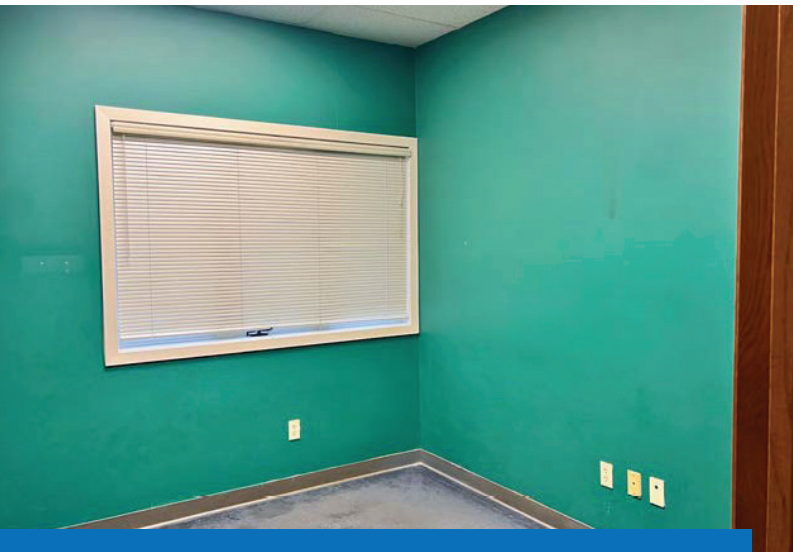
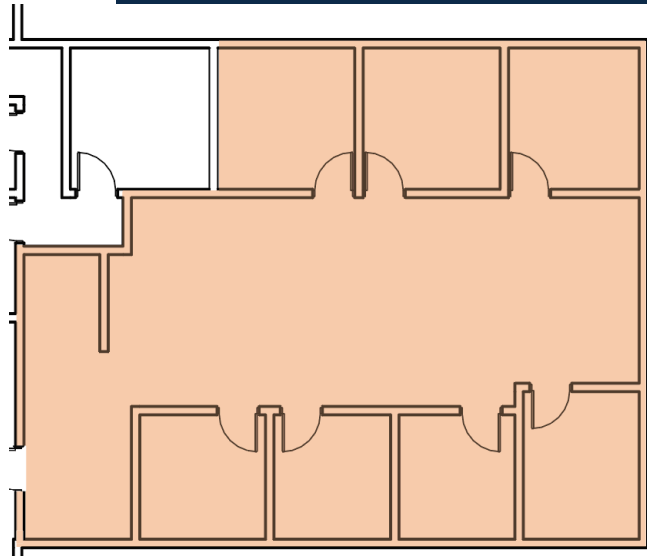


**RANGE**  
REALTY PARTNERS



# SUITE 101

2,577 SF AVAILABLE, \$22.00 PSF



FOR MORE INFORMATION, CONTACT:

**MELISSA GALL**  
Associate  
Direct: 816.831.1404  
[melissa.gall@range-rp.com](mailto:melissa.gall@range-rp.com)



**RANGE**  
REALTY PARTNERS