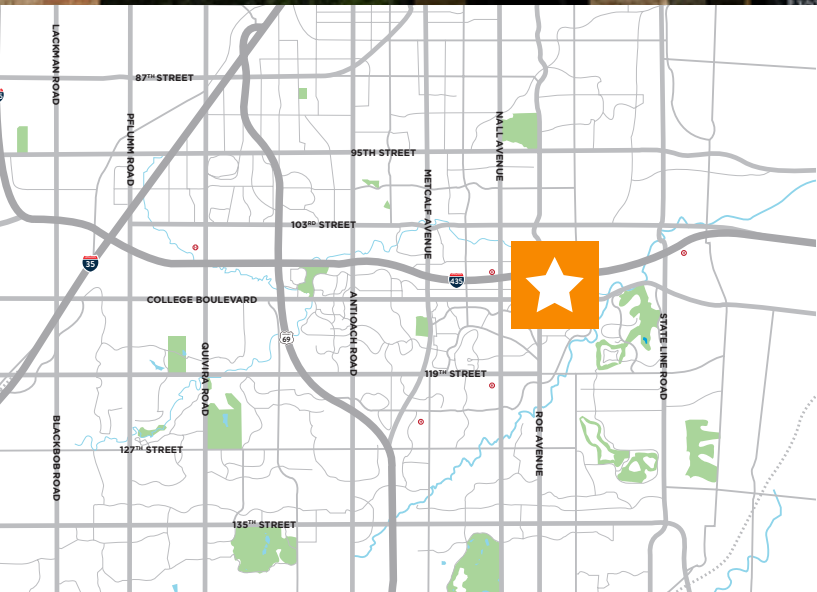


1,918 SF CLASS B OFFICE FOR SUBLEASE

COLLEGE VIEW BUILDING

4500 W COLLEGE BOULEVARD, OVERLAND PARK KS



PROPERTY HIGHLIGHTS:

- 1,918 square-foot sublease space available on the second floor of the College View Building
- Located in the Foxhill Office Park, at the corner of Roe Avenue and College Boulevard
- Instant access to Interstate 435 with easy connection to Interstate 35 and Highway 69
- Adjacent surface parking, 4,000/1,000 SF ratio
- Sublease runs through July 31, 2023

FOR MORE INFORMATION, CONTACT:

Miles McCune
PRESIDENT & FOUNDER
Direct: 816.831.1402
miles.mccune@range-rp.com

RANGEREALTYPARTNERS.COM



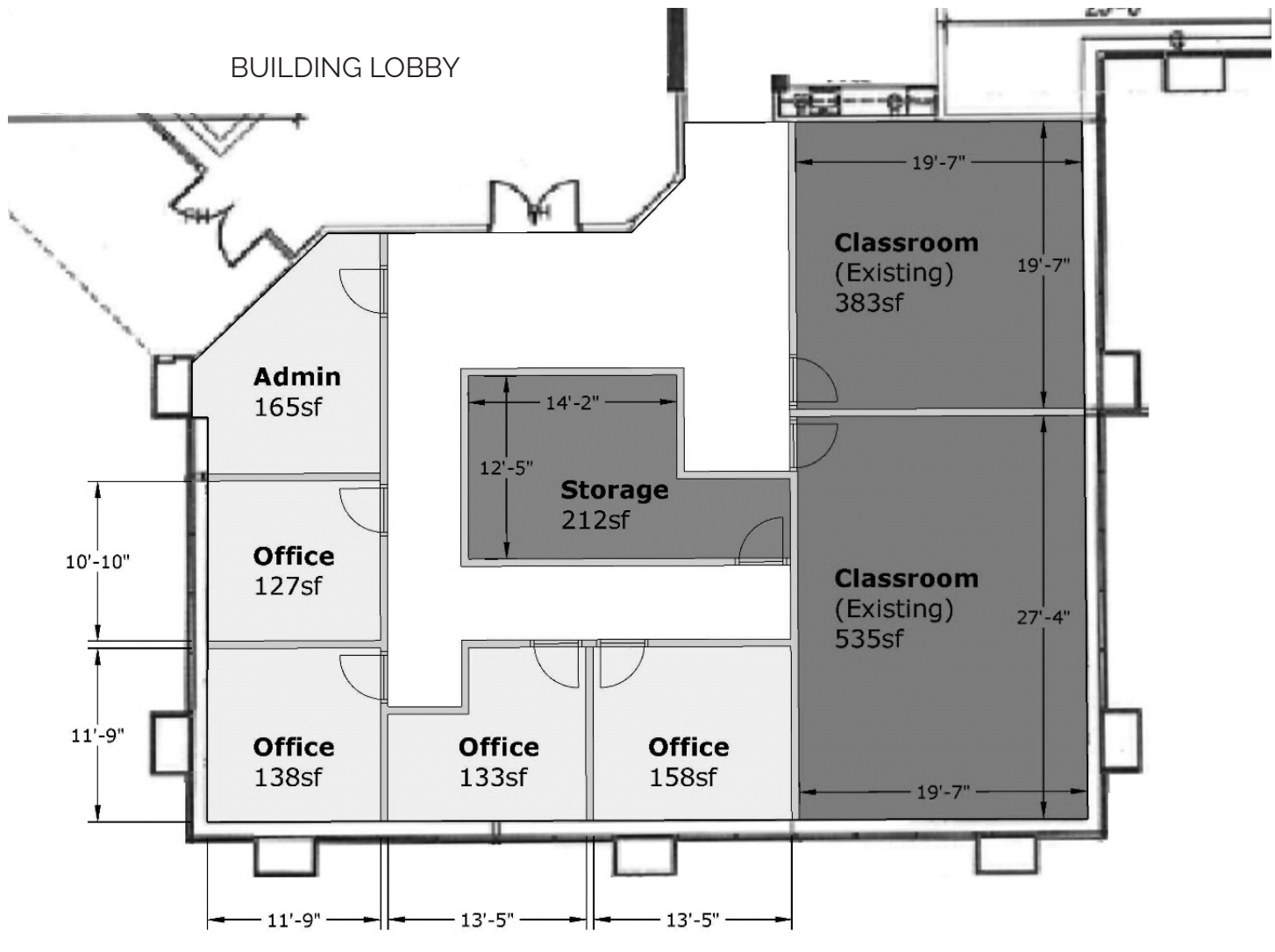
RANGE
REALTY PARTNERS

1,918 SF CLASS B OFFICE FOR SUBLEASE

COLLEGE VIEW BUILDING

4500 W COLLEGE BOULEVARD, OVERLAND PARK KS

SECOND FLOOR: 1,918 SF



FOR MORE INFORMATION, CONTACT:

Miles McCune

PRESIDENT & FOUNDER

Direct: 816.831.1402

miles.mccune@range-rp.com

RANGEREALTYPARTNERS.COM

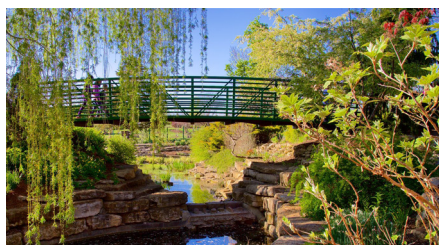
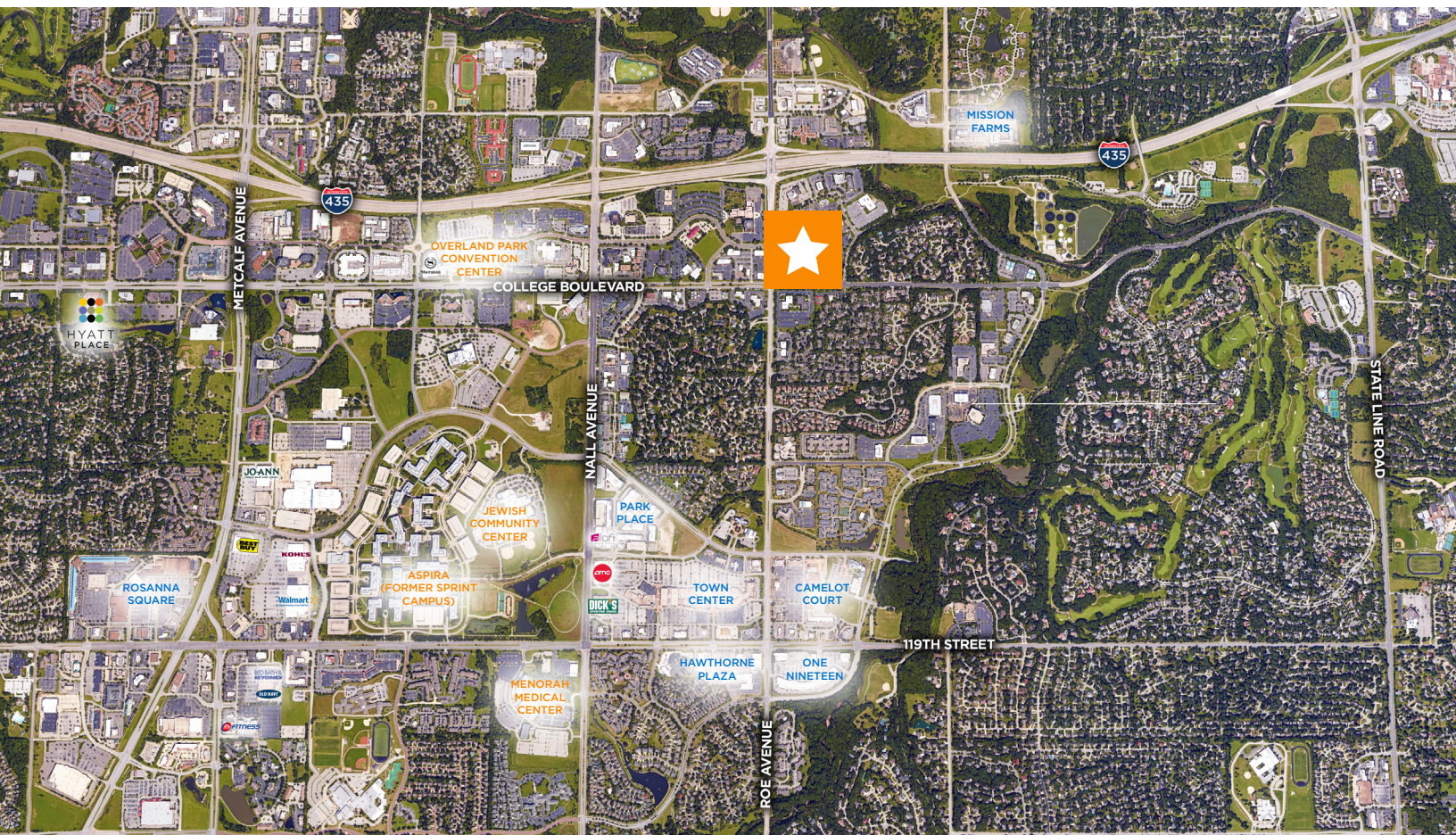


RANGE
REALTY PARTNERS

1,918 SF CLASS B OFFICE FOR SUBLEASE

COLLEGE VIEW BUILDING

4500 W COLLEGE BOULEVARD, OVERLAND PARK KS



DRIVE TIMES:

- 119th Street Corridor Shopping, 5 minutes
- Interstate Access: I-435, 5 minutes; I-35, 10 minutes; Highway-69, 10 minutes
- Country Club Plaza, 15-20 minutes
- Downtown KC, 20-25 minutes
- KCI Airport, 35-40 minutes

FOR MORE INFORMATION, CONTACT:

Miles McCune

PRESIDENT & FOUNDER

Direct: 816.831.1402

miles.mccune@range-rp.com

RANGEREALTYPARTNERS.COM



RANGE
REALTY PARTNERS