



**RANGE**  
REALTY PARTNERS



CLASS A OFFICE SUBLEASE | LENEXA CITY CENTER

**8801** RENNER BLVD

LENEXA, KS

# PROPERTY HIGHLIGHTS

For companies looking to establish a presence in Lenexa City Center's walkable mixed-use environment, this sublease offers the opportunity to plug into an established professional community in one of Johnson County's most desirable and supply-constrained office districts.

Located at 8101 Renner Boulevard, this ±4,214 SF Class-A office suite sits within a fully leased building, presenting a rare opportunity to secure space in a district where availability is increasingly limited.

- **±4,214 SF** of move-in ready office
- **\$30 PSF / Full Service**
- Sublease Expiration: **July 31, 2028**
- Interior window decal signage with **visibility from I-435**





**RANGE**  
REALTY PARTNERS



## LENEXA CITY CENTER

# LOCATION HIGHLIGHTS

Lenexa City Center is one of Johnson County's most vibrant live-work-play districts, bringing together office, residential, retail, and civic uses. Anchored by Restaurant Row, the Lenexa Public Market, and City Center Park, the area maintains strong daily activity.

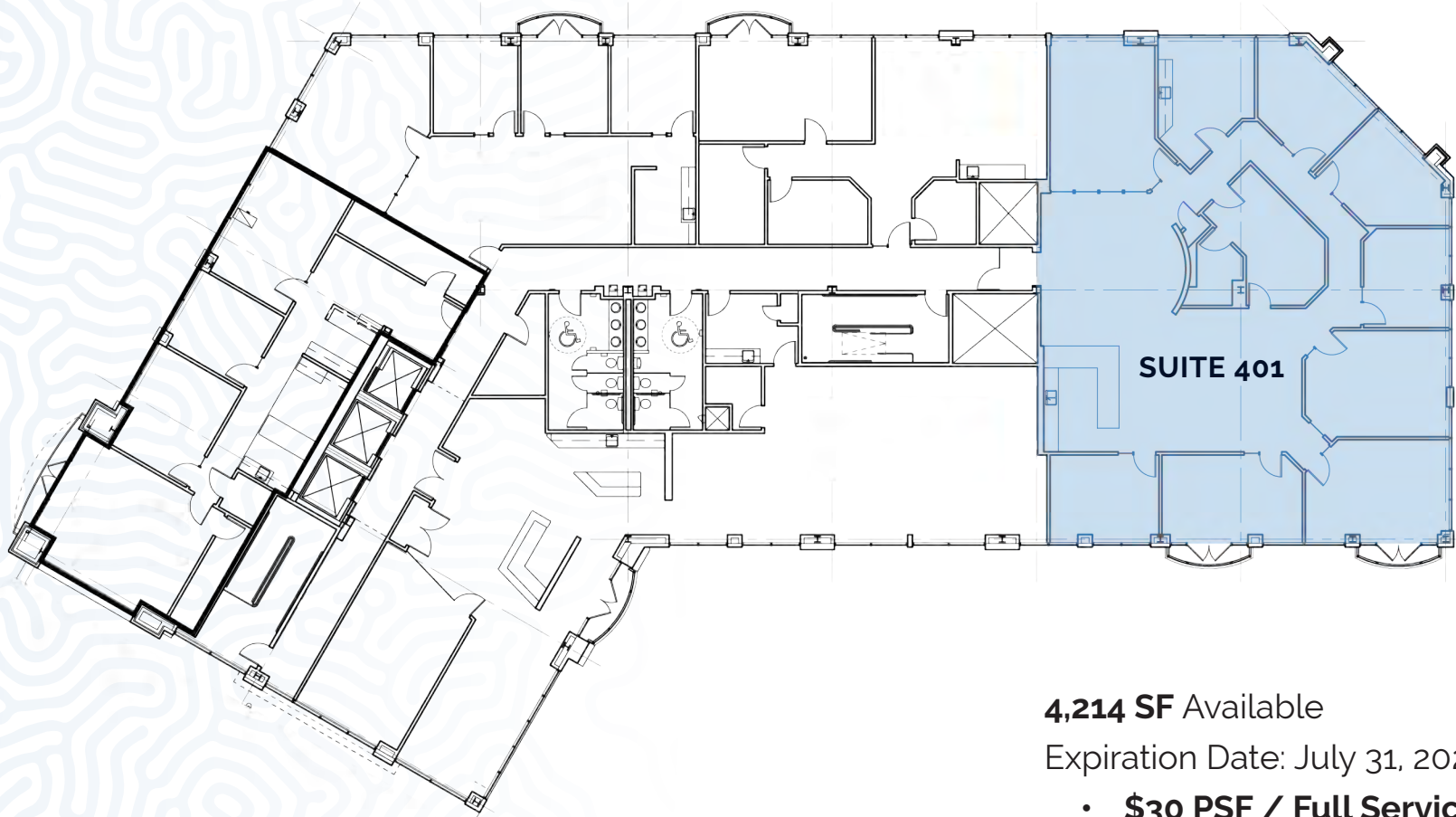
Major employers like Kiewit, AdventHealth, and Park University's Lenexa's Campus support a strong daytime workforce, while nearby dining, coffee, fitness, and events create an active, walkable workplace environment.

# FLOOR PLAN

## FOURTH FLOOR



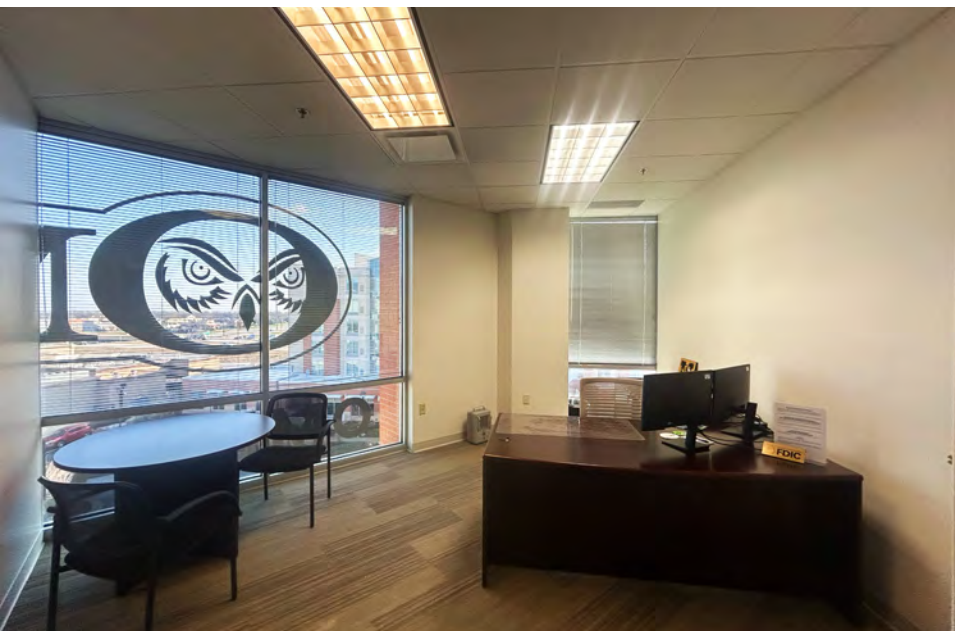
**RANGE**  
REALTY PARTNERS



**4,214 SF** Available

Expiration Date: July 31, 2028

- **\$30 PSF / Full Service**



**RANGE**  
REALTY PARTNERS

**FOR MORE INFORMATION,  
CONTACT:**

**MELISSA GALL**

Associate  
Direct (816).831.1404  
[melissa.gall@range-rp.com](mailto:melissa.gall@range-rp.com)