

12850

METCALF AVE



RANGE
REALTY PARTNERS

2,912 SF | MEDICAL OFFICE FOR SUBLEASE
12850 METCALF AVE
OVERLAND PARK, KS | \$30/PSF

PROPERTY OVERVIEW

12850 Metcalf epitomizes excellence in building ownership, space quality, and a prime location within Deercreek Commons. This turnkey sublease presents 2,900 square feet of top-tier, Class A medical office space, ready for occupancy from now until October 2026.

HIGHLIGHTS

- Beautiful lobby/waiting area for patients
- 5 exam rooms with plumbing, 2 waiting areas (1 with plumbing), a sterilizer room with plumbing, a large break room, a provider office and a histology lab
- Monument Signage available on Metcalf Avenue w/22,300 CPD
- Sublease through 10/31/2026



SUBLEASE RATE
\$30/PSF
SUITE SIZE
2,912 SQ FT
SIGNAGE
MONUMENT SIGNAGE
ON METCALF AVENUE
SPACE CONDITION
MOVE-IN READY, CLASS A
MEDICAL SPACE



FOR MORE INFORMATION, CONTACT:

TRAVIS HELGESON

CO-FOUNDER & VICE PRESIDENT
Direct: 816.831.1403
travis.helgeson@range-rp.com

MELISSA GALL

ASSOCIATE
Direct: 816.831.1404
melissa.gall@range-rp.com

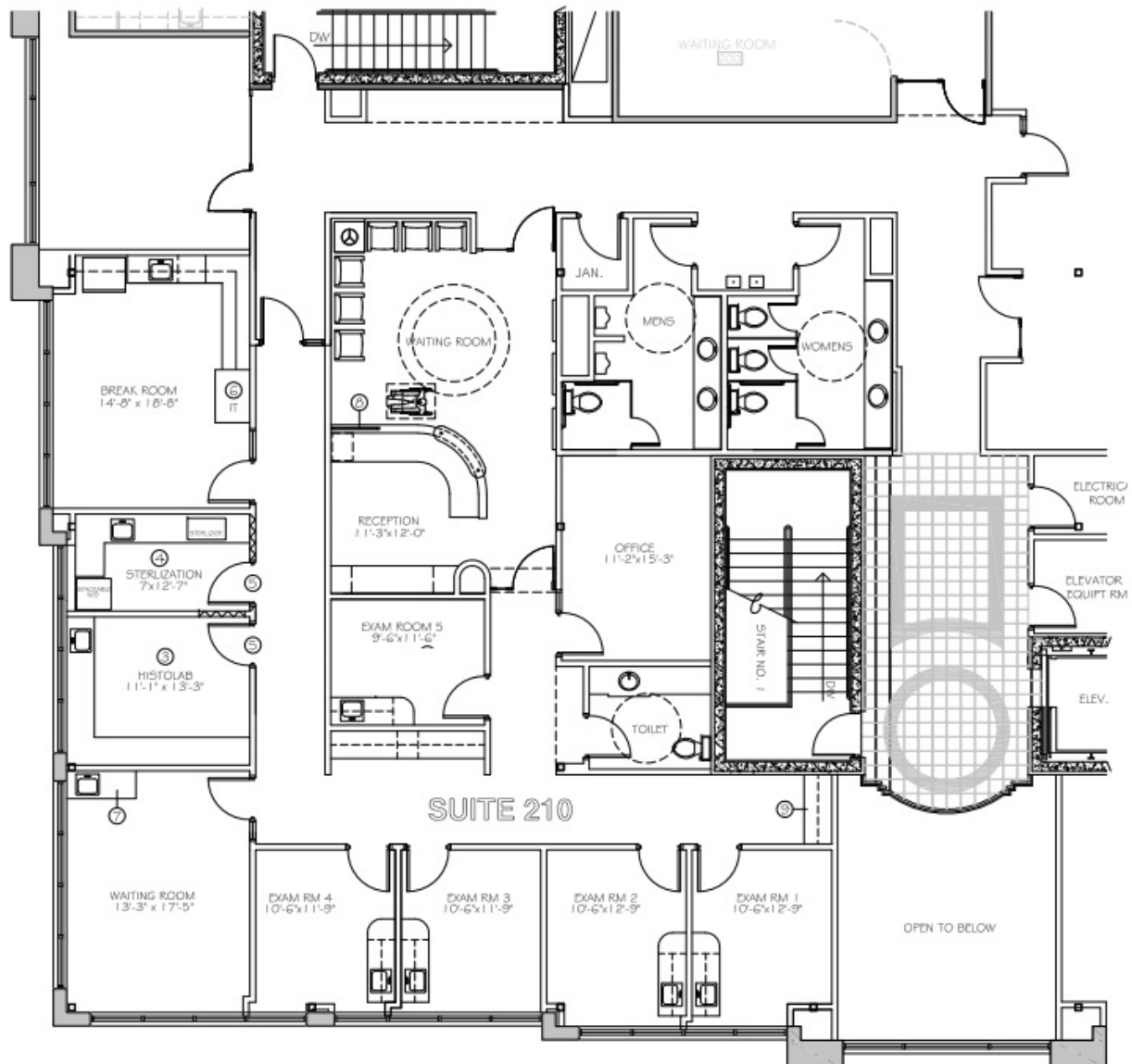
RANGEREALTYPARTNERS.COM





RANGE
REALTY PARTNERS

SECOND FLOOR: +/- 2,912 RSF



FLOOR PLAN - SUITE 210

BLUE VALLEY MEDICAL BUILDING 12850 METCALF AVE., OVERLAND PARK, KS
08/02/21



RANGE

REALTY PARTNERS



FOR MORE INFORMATION, CONTACT:

TRAVIS HELGESON

CO-FOUNDER & VICE PRESIDENT

Direct: 816.831.1403

travis.helgeson@range-rp.com

MELISSA GALL

ASSOCIATE

Direct: 816.831.1404

melissa.gall@range-rp.com

RANGEREALTYPARTNERS.COM